

BELZONA LOAD BEARING SHIM SEALS DOCK GATES

CUSTOMER

Harbour Authority, UK

APPLICATION DATE

2001

APPLICATION SITUATION

Dock Gates, part of the new sea defences

PROBLEM

High tides are getting higher and the existing gates were not tall enough to cope with the new levels of water. An extension was fabricated to raise their height.

PRODUCTS

Belzona® 1121 (Super XL Metal)

SUBSTRATE

Steel

APPLICATION METHOD

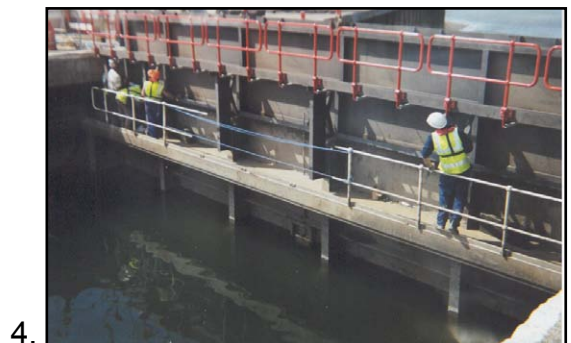
Application was carried out in accordance with Belzona Know-How System Leaflet GSS-9.

BELZONA FACTS

The top extension needed to fit snugly to prevent leaking. Belzona provided a load bearing shim between existing and new section. It is still preventing leaking in January 2008.

PICTURES

1. Original height of the Dock Gates
2. Swinging new section into place
3. Final positioning
4. Home and dry



For more examples of *Belzona Know-How In Action*, please visit <http://khia.belzona.com>



Belzona products are manufactured under an ISO 9000 Registered Quality Management System.

UK • USA • Canada • China
www.belzona.com

